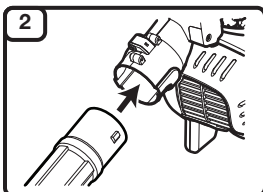
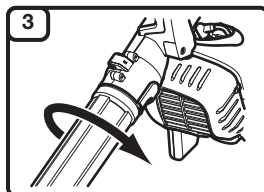


Read the operator's manual thoroughly before operating the unit. Follow all warnings and safety instructions. This fast guide is intended as a reference for users that have already read the operator's manual and are familiar with the necessary safety precautions.

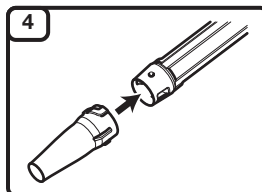


ASSEMBLY

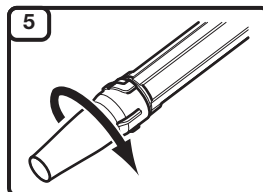
NOTE: Always install the upper blower tube.
Align the bumps on the upper end of the upper blower tube with the slots on the blower outlet. Insert the upper blower tube into the blower outlet.



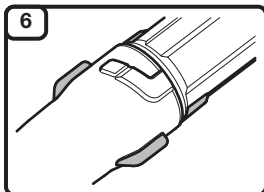
While holding the handle, twist the upper blower tube clockwise until it locks into place.



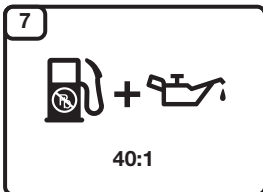
NOTE: The nozzle and curved lower blower tube are optional.
Align the slots on the nozzle or curved lower blower tube with the bumps on the lower end of the upper blower tube. Install the nozzle or curved lower blower tube onto the upper blower tube.



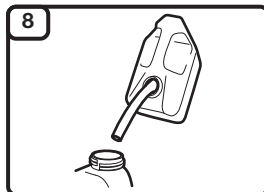
While holding the upper blower tube, twist the nozzle or curved lower blower tube clockwise until it locks into place.



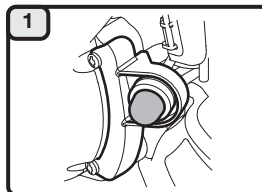
The tabs on the upper blower tube should align with the tabs on the nozzle.
NOTE: The tabs on the upper blower tube will not completely align with the tabs on the curved lower blower tube.



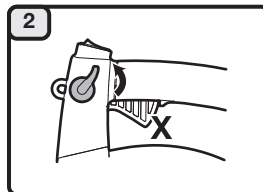
Mix thoroughly in a separate fuel can:
– 3.2 fl. oz. of 2-cycle engine oil
– 1 gallon of fresh unleaded gasoline (**less than 30 days old**)
NOTE: Do not mix directly in the unit fuel tank.



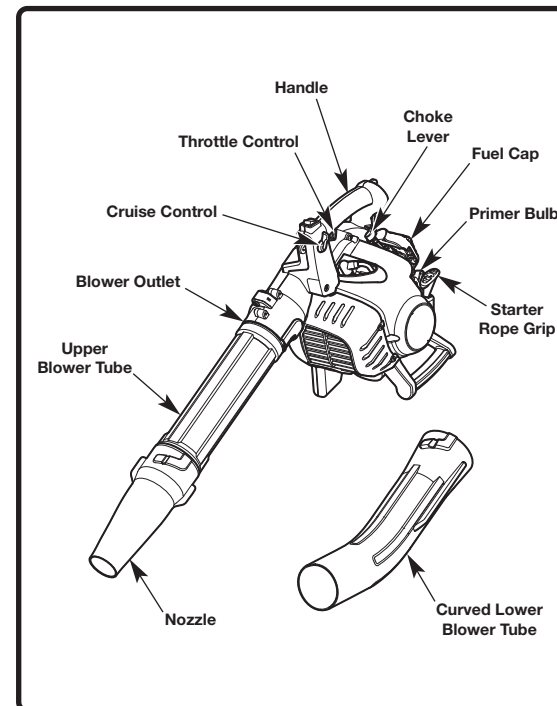
Position the unit with the fuel cap facing up. Slowly remove the fuel cap. Fill the fuel tank. Reinstall the fuel cap. Move the unit at least 30 ft. (9.1 m) from the fuel container and the fueling site before starting the engine.



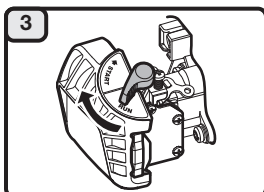
STARTING
Press the primer bulb 10 times.



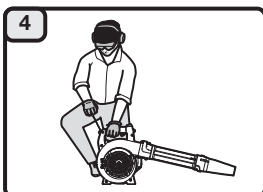
Move the cruise control to the **LO (slow)** position.
NOTE: Keep the cruise control in the LO (slow) position and DO NOT squeeze the throttle control until step 7.



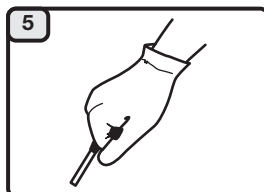
NO ASSEMBLY TOOLS REQUIRED



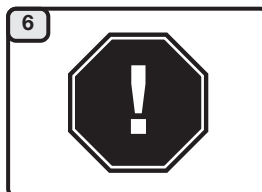
Flip the choke lever clockwise until it clicks into the **START** position.



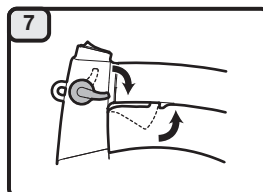
Crouch in the starting position.



Pull the starter rope with a controlled and steady motion until the unit starts.



Idle the engine for 30 seconds.



Squeeze and hold the throttle control or move the cruise control to the **HI (fast)** position.

DIDN'T START?
Repeat the starting instructions.
If the unit still fails to start, refer to the operator's manual for additional starting and troubleshooting information.
NOTE: This unit includes a cruise control, which allows the operator to maintain the desired engine speed without having to squeeze the throttle control.



IMPORTANT: READ THE OPERATOR'S MANUAL THOROUGHLY AND FOLLOW THE SAFE OPERATION PRACTICES WHILE OPERATING THE UNIT.

Lea la traducción en Español en el manual.