



Adjustable Angle Bath Waste and Overflow Kits

Adjusts 10° front to back and side to side matching different tub wall angles.

Chrome models available



- 1 Adjust**
- 2 Turn**
- 3 & Snap!**

10°



A modern design for simple installation

The overflow is designed with a secured gasket and a retainer nut that can be hand tightened. An enhanced faceplate simply snaps firmly on without the use of unsightly screws or bolts.



Pop-Up models also available in Brushed Nickel and Matte Black.

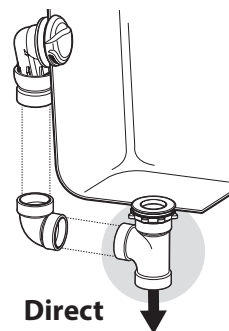
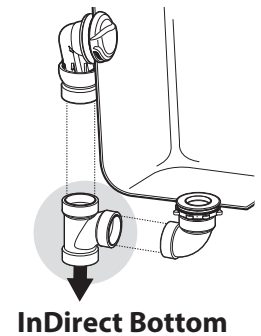
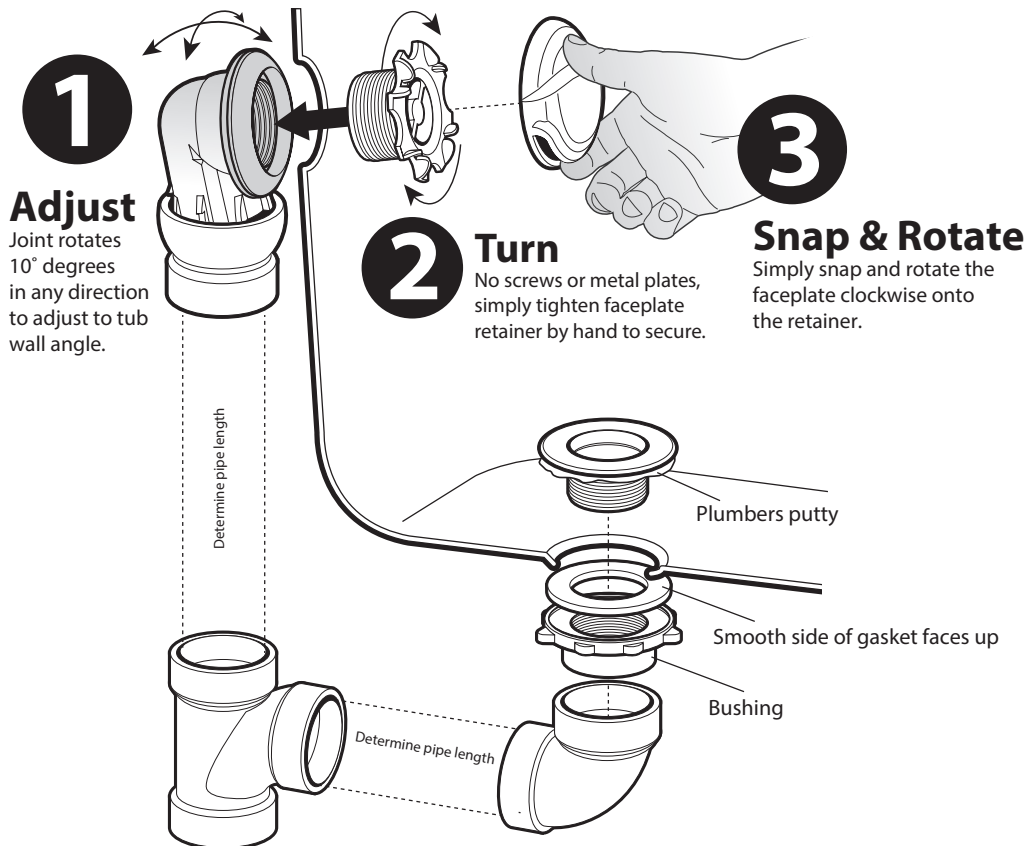


1-1/2" ABS DWV Adjustable Waste & Overflow Kits

		KIT FINISH & STYLE	PART#
		CHROME PLUG & CHAIN	27760
		CHROME LIFT & TURN	27761
		CHROME POP-UP	27762
		MATTE BLACK POP-UP	27764
		BRUSHED NICKEL POP-UP	27763

Installation

You choose
outlet direction



Corporate Office:
1425 North Service Rd. E. Unit 3, Oakville ON L6H 1A7

Phone: 289-881-0120 / 1-866-777-8023
retailorders32@ipexamerica.com

www.ipexna.com

IPEX
by aliaxis