



CTT-HD200

## TOOLS & ACCESSORIES

### CABLE TIE TENSIONING TOOLS

#### CTT-45

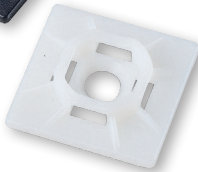
Tightens and cuts off cable ties.

- Quick twist snaps off excess length.
- Lightweight economical and Heavy-Duty version available.

| Part #    | Tension Strength | Pack Qty. | Color |
|-----------|------------------|-----------|-------|
| CTT-45    | 75 lb            | 1/Card    | Red   |
| CTT-HD200 | 200 lb           | 1/Card    | Red   |



45-MBUVB



45-MB

### MOUNTING BASES & PUSH MOUNTS

- Adhesive-backed mounting bases for securing wire and cable bundles.
- Center screw hole for extra holding power.
- Molded with durable nylon 6/6 material.
- Four-sided insertion design for mounting flexibility.



45-PMBUVB



45-PMB

| Part #    | Size          | Pack Qty. | Color   | Fits Widths Up To | Recommended Cable Tie Size |
|-----------|---------------|-----------|---------|-------------------|----------------------------|
| 45-MB     | 1" x 1"       | 5/bag     | Natural | .17"              | 18 lbs to 75 lbs           |
| 45-MBUVB  | 1" x 1"       | 5/bag     | Black   | .17"              | 18 lbs to 75 lbs           |
| MB-20     | 1" x 1"       | 100/bag   | Natural | .17"              | 18 lbs to 75 lbs           |
| MB-20UVB  | 1" x 1"       | 100/bag   | Black   | .17"              | 18 lbs to 75 lbs           |
| 45-PMB    | 5/16" x 9/16" | 10/clam   | Natural | .21"              | 18 lbs to 75 lbs           |
| 45-PMBUVB | 5/16" x 9/16" | 10/clam   | Black   | .21"              | 18 lbs to 75 lbs           |