

# BALL MOUNTS

# Bring It



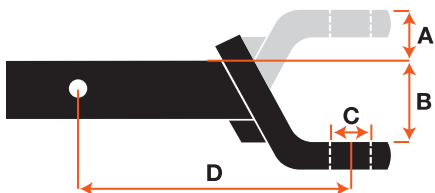
CURT has invested in the technology necessary to produce a full line of exceptionally strong and attractive ball mounts. The vast majority of our line is CNC formed and assembled using robotic welding. Our advanced manufacturing techniques ensure accurate, consistent cuts and strong, clean weld lines. Once welded, these mounts undergo a process that

creates a flawless surface for the application of our highly-durable powder coat finish.

With a ball mount line that includes the Euro Mount®, Fusion Mount, loaded and adjustable mounts, we are sure to have the mount your customers need to Bring It®!

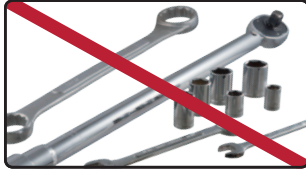
## Measuring a ball mount

A: Rise | B: Drop | C: Hole Size | D: Length



# ADVANTAGES OF THE EURO MOUNT®

If your customer is looking for a simple, maintenance-free 1 1/4" ball mount option, the Euro Mount® is the perfect choice. With the Euro Mount®, there are fewer installation requirements, making it even easier to choose the correct 1 1/4" ball mount. Take a look below to find the Euro Mount® that works best for their towing needs.



No tools required,  
no torque specifications



Includes 1 7/8" or 2"  
trailer ball, no need to  
purchase one separately



Easy installation, simply  
insert the pin & clip, and your  
customer is ready to tow



Sleek, modern look, similar  
to popular European designs

## Each Euro Mount® was designed to replace a common, old-style ball mount, making trailer ball installation unnecessary

The comparisons below illustrate each Euro Mount® replacing a common, old-style ball mount



45561 Euro Mount®  
and 45520 old-style



45591 Euro Mount®  
and 45522 old-style



45571 Euro Mount®  
and 45521 old-style



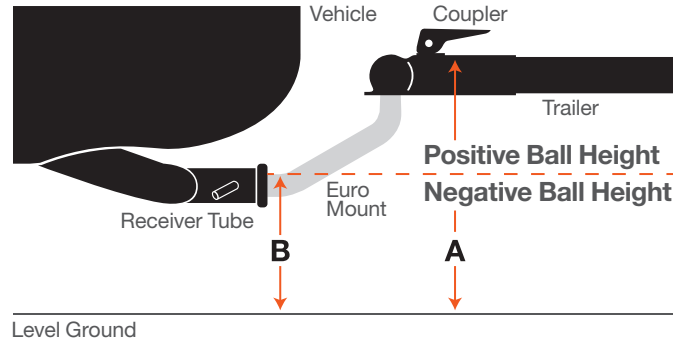
45581 Euro Mount®  
and 45521 old-style



45551 Euro Mount®  
and 45518 old-style

## How to measure the Euro Mount®:

Required Ball Height = A-B



## 1 1/4 INCH EURO MOUNT® BALL MOUNTS

- For trailer hitches with an 1 1/4" x 1 1/4" receiver tube opening
- Permanently attached 1 7/8" or 2" trailer ball
- Two-mount multi-packs include an attractive point-of-purchase tray
- This product is covered by one or more patents: D610,051 S; D610,492 S; D610,493 S; D610,494 S; D610,954 S
- Durable carbide powder coat finish



Multi-pack display



45551



45552



45571



45572



45561



45562



45591



45592



45581



45582

Bulk#	Multi-Pack#	Ball Diameter	Ball Height	Length	GTW / TW
45551	45551002	1 7/8"	2 3/4"	10"	3,500 / 350 lbs.
45571	45571002	1 7/8"	4 5/8"	7 1/4"	3,500 / 350 lbs.
45561	45561002	1 7/8"	5 1/8"	9 3/4"	3,500 / 350 lbs.
45591	45591002	1 7/8"	5 1/8"	11 1/4"	3,500 / 350 lbs.
45581	45581002	1 7/8"	- 3/4"	8 3/4"	3,500 / 350 lbs.
45552	45552002	2"	2 3/4"	10"	3,500 / 350 lbs.
45572	45572002	2"	4 5/8"	7 1/4"	3,500 / 350 lbs.
45562	45562002	2"	5 1/8"	9 3/4"	3,500 / 350 lbs.
45592	45592002	2"	5 1/8"	11 1/4"	3,500 / 350 lbs.
45582	45582002	2"	- 3/4"	8 3/4"	3,500 / 350 lbs.

**1 1/4**  
INCH

# BALL MOUNTS CLASS I & II

- For trailer hitches with an 1 1/4" x 1 1/4" receiver tube opening
- Durable powder coat finish



Bulk#	Drop	Rise	Length	GTW / TW	Hole
45503	1"	3/8"	7 13/16"	3,500 / 350 lbs.	3/4"
45018	1 1/4"	5/8"	6 3/4"	2,000 / 200 lbs.	3/4"
45019	1 1/4"	5/8"	9 3/4"	2,000 / 200 lbs.	3/4"
45518	1 1/4"	3/4"	6 3/4"	3,500 / 350 lbs.	3/4"
45519	1 1/4"	3/4"	9 3/4"	3,500 / 350 lbs.	3/4"
45027	3 1/4"	2 5/8"	6 1/4"	2,000 / 200 lbs.	3/4"
45017	3 1/4"	2 5/8"	6 1/4"	3,500 / 350 lbs.	3/4"
45022	3 1/4"	2 5/8"	7 1/4"	2,000 / 200 lbs.	3/4"
45521	3 1/4"	2 5/8"	7 1/4"	3,500 / 350 lbs.	3/4"
45026	3 1/4"	2 5/8"	9 3/8"	2,000 / 200 lbs.	3/4"
45016	3 1/4"	2 5/8"	9 3/8"	3,500 / 350 lbs.	3/4"
45028	6"	4 5/8"	5 9/16"	2,000 / 200 lbs.	3/4"
45021	--	3"	9 1/2"	2,000 / 200 lbs.	3/4"
45520	--	3 1/8"	9 3/4"	3,500 / 350 lbs.	3/4"
45510	--	3 1/8"	10 5/16"	3,500 / 350 lbs.	3/4"
45522	--	3 1/8"	11 1/4"	3,500 / 350 lbs.	3/4"
45023	--	3 3/4"	11 1/2"	2,000 / 200 lbs.	3/4"
45000	--	3 7/8"	13 1/2"	3,500 / 350 lbs.	3/4"
45024	--	5"	9 9/16"	2,000 / 200 lbs.	3/4"
45014	--	5"	9 5/8"	3,500 / 350 lbs.	3/4"
45025	--	5"	11 9/16"	2,000 / 200 lbs.	3/4"
45015	--	5"	11 5/8"	3,500 / 350 lbs.	3/4"

**2**  
INCH

# BALL MOUNTS CLASS III

- For trailer hitches with a 2" x 2" receiver tube opening
- White box kits include a pin & clip
- Durable chrome or powder coat finish



Black Bulk#	Chrome Bulk#	Retail Pkg#	White Box Kit#	With Pin & Clip Poly Bag#	Drop	Rise	Length	GTW / TW	Hole Size
45030	45290	45031	45032	45033	2"	3/4"	8 1/4"	7,500 / 750 lbs.	1"
45010	--	45011	45012	--	2"	3/4"	8 1/4"	7,500 / 750 lbs.	1"
45040	--	--	--	--	2"	3/4"	10 1/4"	7,500 / 750 lbs.	1"
45020	--	--	--	--	2"	3/4"	10 1/4"	7,500 / 750 lbs.	1"
45260	--	--	--	--	2"	3/4"	12 1/4"	7,500 / 750 lbs.	1"
45250	--	--	--	--	2"	3/4"	12 1/4"	7,500 / 750 lbs.	1"
45050	45296	45051	45052	--	4"	2"	8 1/4"	7,500 / 750 lbs.	1"
45060	--	--	--	--	4"	2"	10 1/4"	7,500 / 750 lbs.	1"
45270	--	--	--	--	4"	2"	13"	7,500 / 750 lbs.	1"
45070	45297	--	--	--	6"	4"	9 1/4"	7,500 / 750 lbs. drop 6,000 / 600 lbs. rise	1"
45080	--	--	--	--	6"	4"	12 1/4"	7,500 / 750 lbs. drop 6,000 / 600 lbs. rise	1"
45280	--	--	--	--	6"	4"	14 1/4"	7,500 / 750 lbs. drop 6,000 / 600 lbs. rise	1"
45090	--	--	--	--	8"	6"	11 1/2"	5,000 / 500 lbs. drop 3,500 / 350 lbs. rise	1"
45100	--	--	--	--	8"	6"	13"	5,000 / 500 lbs. drop 3,500 / 350 lbs. rise	1"
45110	--	--	--	--	10"	8"	13"	5,000 / 500 lbs. drop 3,500 / 350 lbs. rise	1"
45112	--	--	--	--	10"	8"	14"	5,000 / 500 lbs. drop 3,500 / 350 lbs. rise	1"



2

INCH

## LOADED BALL MOUNTS

- For trailer hitches with a 2" x 2" receiver tube opening
- Pin & clip included
- Complete with factory-torqued CURT trailer ball
- Three-mount multi-packs include an attractive point-of-purchase tray



Multi-Pack



45036



45056



45331



45332



45295

Bulk#	White Box Kit#	Multi-Pack#	Drop	Length	GTW / TW	Ball Diameter	Finish
45034	--	45035	2"	8 1/4"	3,500 / 350 lbs.	1 7/8" (40002)	Gloss black
--	45293	--	2"	8 1/4"	3,500 / 350 lbs.	1 7/8" (40002)	Chrome
45036	--	45037	2"	8 1/4"	7,500 / 750 lbs.	2" (40037)	Gloss black
--	45295	--	2"	8 1/4"	7,500 / 750 lbs.	2" (40037)	Chrome
45041	--	45041003	2"	8 1/4"	7,500 / 750 lbs.	2 5/16" (40005)	Gloss black
45331	--	--	2"	8 1/2"	15,000 / 1,500 lbs.	2 5/16" (40030)	Carbide
45055	--	--	4"	8 1/4"	3,500 / 350 lbs.	1 7/8" (40002)	Gloss black
45056	--	45057	4"	8 1/4"	7,500 / 750 lbs.	2" (40037)	Gloss black
45042	--	45042003	4"	8 1/4"	7,500 / 750 lbs.	2 5/16" (40005)	Gloss black
45332	--	--	4"	8 1/2"	15,000 / 1,500 lbs.	2 5/16" (40030)	Carbide

2

INCH

## FUSION BALL MOUNTS

- For trailer hitches with a 2" x 2" receiver tube opening
- Pin & clip included
- Permanently attached trailer ball cannot be loosened or stolen
- Two-mount multi-packs include an attractive point-of-purchase tray



45134



45154



45155



45136

45156

Bulk#	Multi-Pack#	Drop	Rise	Length	GTW / TW	Ball Diameter	Finish
45131	45136	2"	--	7 1/2"	5,000 / 500 lbs.	1 7/8"	Gloss black
45134	45139	2"	--	7 1/2"	7,500 / 750 lbs.	2"	Gloss black
45151	45156	4"	--	8 1/8"	5,000 / 500 lbs.	1 7/8"	Gloss black
45154	45158	4"	--	8 1/8"	7,500 / 750 lbs.	2"	Gloss black
45152	45157	--	2"	8 1/8"	5,000 / 500 lbs.	1 7/8"	Gloss black
45155	45159	--	2"	8 1/8"	7,500 / 750 lbs.	2"	Gloss black

**2**  
INCH

## RIGHT-ANGLE BALL MOUNTS

- For trailer hitches with a 2" x 2" receiver tube opening
- Angled shank for easier insertion into the trailer hitch receiver tube



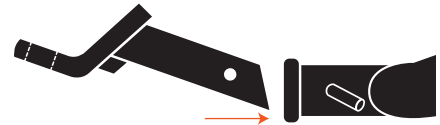
45047



45067



45087



Easy to insert into receiver tube

Bulk#	Drop	Rise	Length	GTW / TW	Hole Size	Finish
45047	2"	3/4"	10 1/4"	7,500 / 750 lbs.	1"	Gloss black
45067	4"	2"	10 1/4"	7,500 / 750 lbs.	1"	Gloss black
45087	6"	4"	12 1/4"	7,500 / 750 lbs. drop 6,000 / 600 lbs. rise	1"	Gloss black

**2**  
INCH

## DUAL-LENGTH BALL MOUNTS

- For trailer hitches with a 2" x 2" receiver tube opening
- Two pin holes for varying length



45220



45230



45240



Two pin holes  
for varying length

Bulk#	Drop	Rise	Length	GTW / TW	Hole Size	Finish
45220	2"	3/4"	7 1/2" and 10 1/2"	7,500 / 750 lbs.	1"	Gloss black
45230	4"	2"	8 1/8" and 11 1/8"	7,500 / 750 lbs.	1"	Gloss black
45240	6"	4"	9 1/4" and 12 1/4"	7,500 / 750 lbs. drop 6,000 / 600 lbs. rise	1"	Gloss black

**2**  
INCH

## HEAVY DUTY BALL MOUNTS

- For trailer hitches with a 2" x 2" receiver tube opening
- Durable powder coat finish



45336



45446



45338



45448

Bulk#	Drop	Rise	Length	GTW / TW	Hole Size
45336	6"	4 3/4"	9 3/8"	10,000 / 1,000 lbs.	1 1/4"
45446	6"	5"	9 3/8"	12,000 / 1,200 lbs.	1 1/4"
45338	8"	6 3/4"	9 3/8"	10,000 / 1,000 lbs.	1 1/4"
45448	8"	7"	9 3/8"	12,000 / 1,200 lbs.	1 1/4"

2

INCH

## FORGED BALL MOUNTS

- For trailer hitches with a 2" x 2" receiver tube opening
- Solid, forged construction
- Durable carbide powder coat finish



45340



45341



45342

Bulk#	Case-Pack#	Drop	Rise	Length	GTW / TW	Hole Size
45340	45340002*	2"	1"	8 1/2"	17,000 / 2,550 lbs.	1 1/4"
45341	45341002*	4"	3"	7"	17,000 / 2,550 lbs.	1 1/4"
45342	45342002*	6"	5"	9 1/2"	17,000 / 2,550 lbs.	1 1/4"

\* Case-packs are two ball mounts in non-display brown boxes

2

INCH

## ADJUSTABLE TRI-BALL MOUNT

- Strong, welded trailer balls
- Includes three 5/8" diameter pins & clips
- Durable powder coat finish



45799



45800



45059

Bulk#	Pkg#	Max Drop	Max Rise	Length	GTW	Ball Diameter	Description
--	45799	5 3/4"	5 3/4"	16"	6,000 / 7,500 / 10,000 lbs.	1 7/8", 2", 2 5/16"	Complete tri-ball assembly
45800	--	--	--	--	6,000 / 7,500 / 10,000 lbs.	1 7/8", 2", 2 5/16"	Replacement head for the 45799
45059	--	5 3/4"	5 3/4"	16"	6,000 / 7,500 / 10,000 lbs.	--	Adjustable shank for the 45799 or 45800

2

INCH

## ADJUSTABLE MULTI-PURPOSE MOUNT & SHANK

- Features welded 2" and 2 5/16" trailer balls and removable clevis bar for lunette rings
- Includes three 5/8" diameter pins & clips



45049



45008



45059



Bulk#	Pkg#	Max Drop	Max Rise	Length	Ball Diameter and Maximum GTW / TW		Description
					2"	2 5/16"	
--	45049	6 1/2"	6 11/16"	14 3/16"	7,500 / 750 lbs.	10,000 / 1,000 lbs.	Complete mount and shank assembly
45008	--	--	--	--	7,500 / 750 lbs.	10,000 / 1,000 lbs.	Replacement head for 45049
45059	--	--	--	--	10,000 / 1,000 lbs. - no ball included		Adjustable shank for 45008 or 45799

Patent# 8,534,695

2

INCH

## ADJUSTABLE CHANNEL-STYLE MOUNT

- Up to 14,000 lbs. gross trailer weight
- Built-in anti-rattle
- Durable carbide powder coat finish



45900



45910



45901



45911



45919



45920

Bulk#	Pkg#	Max Drop	Max Rise	Length	GTW / TW	Ball Diameter	Hole Size
--	45900*	6"	5 1/4"	11" and 12"	14,000 / 1,400 lbs.	2", 2 5/16"	--
--	45901*	6 3/4"	5 1/4"	11" and 12"	6,000 / 600 lbs.	--	1"
--	45919*	--	--	--	10,000 lbs.	2"	1 1/4"
--	45920*	--	--	--	13,000 lbs.	2 5/16"	1 1/4"
--	23556**	Channel-style mount lock set					
--	45915**	Channel-style mount replacement pins					
45910	--	Replacement shank for the 45900					
45911	--	Replacement shank for the 45901					

\* Packaged in a full color, retail box

\*\* Packaged in a retail clamshell



23556



45915



Built-in anti-rattle

2

INCH

## ADJUSTABLE BALL MOUNT

- For trailer hitches with a 2" x 2" receiver tube opening
- Adjusts in 1 1/2" increments

Bulk#	Max Drop	Max Rise	Length	GTW / TW	Hole Size	Finish
45812	7 1/2"	6 1/4"	12 1/2"	5,000 / 500 lbs.	1"	Gloss black

45812  
Rise45812  
Drop

2

INCH

## MULTI-BALL BALL MOUNTS

- For trailer hitches with a 2" x 2" receiver tube opening
- Permanently attached trailer balls cannot be loosened or stolen



45650



45655



45001



45660



45665



45002

Bulk#	Trailer Balls	Shank Type	Ball Finish	Length	Ball Diameter and Maximum GTW / TW			Finish
					1 7/8"	2"	2 5/16"	
45650	3	Solid	Black	7" and 8 1/2"	5,000 / 500 lbs.	7,500 / 750 lbs.	10,000 / 1,000 lbs.	Gloss black
45655	3	Solid	Chrome	7" and 8 1/2"	5,000 / 500 lbs.	7,500 / 750 lbs.	10,000 / 1,000 lbs.	Gloss black
45001	3	Hollow	Chrome	7" and 8 1/2"	5,000 / 500 lbs.	7,500 / 750 lbs.	10,000 / 1,000 lbs.	Gloss black
45660	2	Solid	Black	8 1/2"	--	7,500 / 750 lbs.	10,000 / 1,000 lbs.	Gloss black
45665	2	Solid	Chrome	8 1/2"	--	7,500 / 750 lbs.	10,000 / 1,000 lbs.	Gloss black
45002	2	Hollow	Chrome	8 1/2"	--	7,500 / 750 lbs.	10,000 / 1,000 lbs.	Gloss black



2

INCH

## REVERSIBLE BALL MOUNTS

- For trailer hitches with a 2" x 2" receiver tube opening
- Permanently attached trailer balls cannot be loosened or stolen



45643



45644

Bulk#	Shank Type	Drop	Rise	Length	Ball Diameter and Maximum GTW / TW			Finish
					1 7/8"	2"	2 5/16"	
45643	Hollow	4" (1 7/8" ball)	2" (2" ball)	10 1/2"	6,000 / 600 lbs.	7,500 / 750 lbs.	--	Gloss black
45644	Hollow	4" (2" ball)	2" (2 5/16" ball)	10 1/2"	--	7,500 / 750 lbs.	7,500 / 750 lbs.	Gloss black

2

INCH

## TOWING STARTER KITS

- Includes ball mount, trailer ball, hitch lock, rubber hitch tube cover and pin & clip
- Sturdy, reusable case is designed to be shelved or hung on pegs
- For trailer hitches with a 2" x 2" receiver tube opening



45534

Pkg#	Drop	Rise	Length	GTW / TW	Ball Diameter	Included Parts
45534	2"	3/4"	8 1/4"	7,500 / 750 lbs.	2"	45030 ball mount, 40037 trailer ball, 23579 hitch lock, 22272 hitch tube cover, 21500 pin & clip
45554	4"	2"	8 1/4"	7,500 / 750 lbs.	2"	45050 ball mount, 40037 trailer ball, 23579 hitch lock, 22272 hitch tube cover, 21500 pin & clip

ATV

## ATV BALL MOUNTS, ADAPTER AND KITS

- For ATVs equipped with 2" x 2" receiver tube openings or a 45006 adapter
- Use the ball mount three different ways
- Adapter includes a welded strap ring
- Never exceed the ATV's maximum tow rating

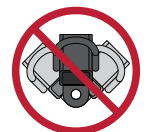
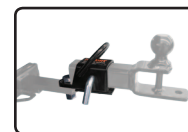
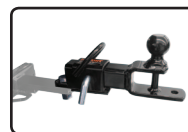
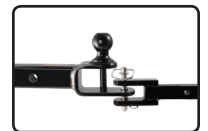
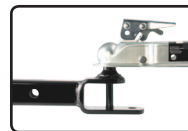


45005



45006

Pkg#	Rise	Ball Diameter	Length	Hole Size	Finish
<b>3-in-1 ATV Ball Mounts (patent# 8,276,932)</b>					
45005	1/4"	1 7/8"	6"	5/8"	Gloss black
45009	1/4"	2"	6"	5/8"	Gloss black
<b>Bolt-on ATV Adapter (patent pending)</b>					
45006	--	--	--	--	Gloss black
<b>ATV Towing Starter Kits (ball mount, adapter, pin &amp; clip)</b>					
45029	1/4"	1 7/8"	6"	5/8"	Gloss black
45038	1/4"	2"	6"	5/8"	Gloss black



Adapter has a no-swivel design

**2**  
INCH

## WELDED D-RING MOUNT

- Welded D-ring for straps and hooks
- Durable powder coat finish
- Patent# 8,226,107



45004

Bulk#	Drop	Rise	Length	GTW / TW	Hole Size
45004	6"	4"	10"	7,500 / 750 lbs. drop 6,000 / 600 lbs. rise	1"

**2**  
INCH

## MULTI-USE BALL MOUNT

- Ideal for carrying a bike rack while towing with a trailer
- Top receiver not for towing use



45810

Bulk#	Drop	Rise	Length	GTW / TW	Hole Size
45810	2"	5 13/16"	12 1/4"	7,500 / 750 lbs.	1"

**2**  
INCH

## RAISED RECEIVER ADAPTER

- Increases ground clearance for cargo carriers or hitch-mounted bike racks
- Not for towing use



45794

Bulk#	Rise	Length	TW	Finish
45794	4 1/4"	5 1/4"	350 lbs.	Gloss black

**2**  
INCH

## DUAL RECEIVER EXTENDER

- Provides two receiver tubes for multiple accessories, such as cargo carriers and bike racks. Top receiver not for towing use



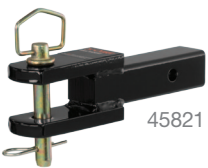
45792

Bulk#	Rise	Length	GTW / TW	Finish
45792	5 13/16"	8"	3,500 / 350 lbs.	Gloss black

**2**  
INCH

## CLEVIS-PIN MOUNT

- For trailer hitches with a 2" x 2" receiver tube opening
- Can be used as standard mount
- Trailer ball sold separately
- Pin & clip included



45821



45821 shown  
with 40004 ball

Bulk#	Length	GTW / TW	Finish	Hole Size
45821	8 3/4"	6,000 / 600 lbs.	Gloss black	1"

**2**  
INCH

## SWAY TAB BALL MOUNT

- For trailer hitches with a 2" x 2" receiver tube opening
- Provides mounting tab for sway control trailer ball
- Trailer ball sold separately
- Durable powder coat finish



45820



45820 shown  
with 40093 ball

Bulk#	Drop	Rise	Length	GTW / TW	Hole Size
45820	2"	3/4"	7 1/2"	7,500 / 750 lbs.	1"

**2 1/2**  
INCH



**2**  
INCH

## REDUCER SLEEVE

- Reduces a 2 1/2" x 2 1/2" receiver tube opening to a 2" x 2" opening

Bulk#	Length	Reduces From	Reduces To	Finish
45405	5 1/2"	2 1/2"	2"	Carbide



45405



2" Ball Mount

2 1/2" Rec. Tube

2

INCH

## TOW HOOK & STRAP MOUNTS

- For trailer hitches with a 2" x 2" receiver tube opening
- GTW and TW are limited to trailer hitch capacity



Bulk#	Length	Finish	Description
45824	7 1/2"	Gloss black	Use with tow straps and hooks, complete with shackle and solid shank
45825	7 1/2"	Gloss black	Use with 83066 vehicle recovery strap or similar
45500	10"	Carbide	Use with 83066 vehicle recovery strap or similar

2 1/2

INCH

## COMMERCIAL DUTY FORGED BALL MOUNTS

- For trailer hitches with a 2 1/2" x 2 1/2" receiver tube opening
- Solid, forged construction
- Durable carbide powder coat finish



Bulk#	Drop	Rise	Length	GTW / TW	Hole Size
45456	2"	1/2"	8 1/2"	20,000 / 2,700 lbs.	1 1/4"
45458	4"	2 1/2"	8 1/2"	20,000 / 2,700 lbs.	1 1/4"

2 1/2

INCH

## WELDED BALL MOUNTS

- For trailer hitches with a 2 1/2" x 2 1/2" receiver tube opening
- Durable powder coat finish



Bulk#	Drop	Rise	Length	GTW / TW	Hole Size
45425	3"	1 1/2"	9 1/2"	15,000 / 1,500 lbs.	1 1/4"
45426	5"	3 1/2"	10"	15,000 / 1,500 lbs.	1 1/4"
45427	8"	6 1/4"	10 1/2"	15,000 / 1,500 lbs.	1 1/4"

1 1/4

INCH

&amp;

2

INCH

## VERTICAL RECEIVER TUBE BALL MOUNTS

- For vehicles equipped with vertical receiver tube openings
- Durable powder coat finish

Bulk#	Shank Size	GTW / TW	Hole Size
45507	1 1/4"	3,500 / 300 lbs.	3/4"
45003	2"	4,000 / 400 lbs.	1"



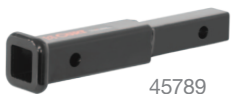
**1 1/4**  
INCH

&

**2**  
INCH

## TRAILER HITCH RECEIVER TUBE OPENING EXTENDERS

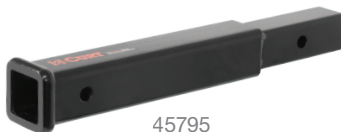
- Extends receiver tube, providing additional clearance
- Durable powder coat finish



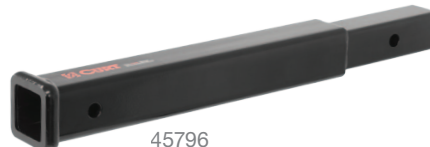
45789



45791



45795



45796

Bulk#	Shank Size	Extends	GTW / TW
45789	1 1/4"	7"	Not for towing use / 350 lbs.
45791	2"	8"	3,500 / 350 lbs.
45795	2"	14"	3,500 / 350 lbs.
45796	2"	18"	3,500 / 350 lbs.

### Measuring extenders and adapters

Length is measured between pin-holes, from center to center



**1 1/4**  
INCH

→

**2**  
INCH

←

**2 1/2**  
INCH

## TRAILER HITCH RECEIVER TUBE OPENING ADAPTERS

- Adapts receiver tube opening to a different size
- 45048 can be cut down from 34" to 24", has integrated safety chain loops and an electrical bracket



45048



45785



45013



45048 - 24" or 36"



45048 - cut to 24"



45790



45770

Bulk#	Adapts From	Adapts To	Length	GTW / TW	WD GTW / TW
45785	1 1/4"	2"	6 1/4"	Not for towing use / 350 lbs.	--
45790	1 1/4"	2"	10"	Not for towing use / 350 lbs.	--
45770	2"	1 1/4"	4"	3,500 / 350 lbs.	--
45775	2"	1 1/4"	9 1/2"	3,500 / 350 lbs.	--
45780	2"	1 1/4"	15"	3,500 / 350 lbs.	--
45013	Vertical 2"	Standard 2"	4 1/4"	5,000 / 500 lbs.	--
45048	2 1/2"	2"	24"	6,000 / 600 lbs.	8,000 / 800 lbs.
			34"	4,500 / 450 lbs.	6,000 / 600 lbs.



45775



45780



Scan  
for more  
information

Connect with us!



Online  
**CURTMFG.COM**

Toll-free  
**877.CURTMFG**