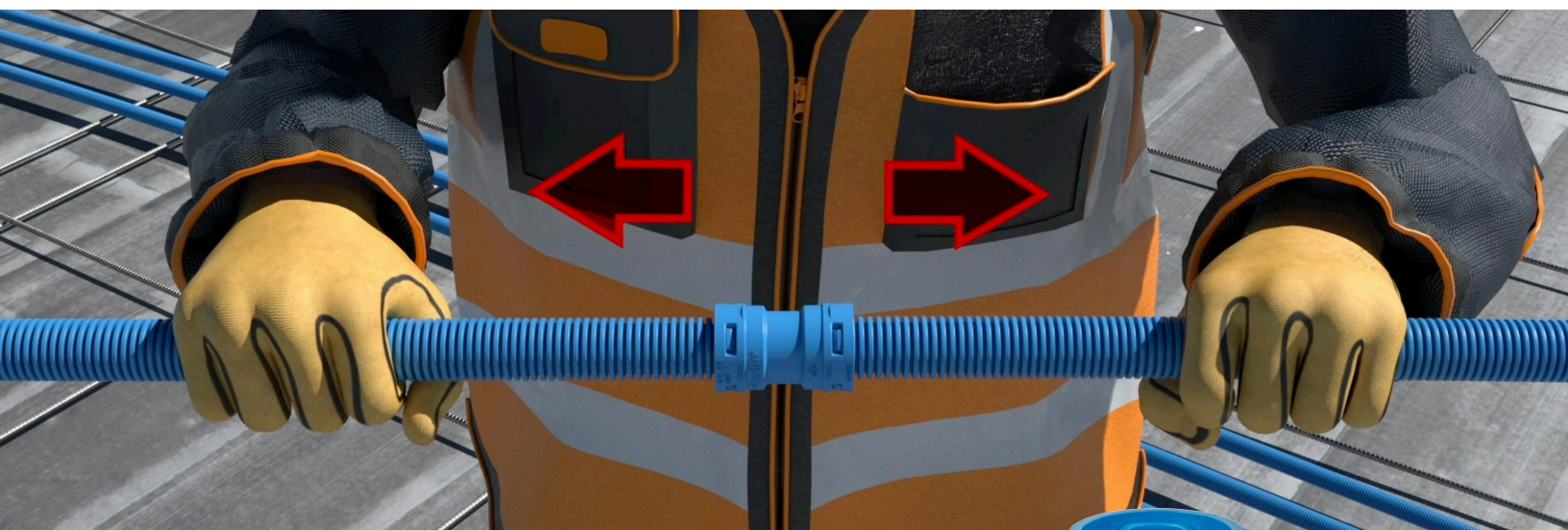


Finding success in poured-in-place concrete construction with Carlon® ENT two-piece fittings



1

Know the market

Also known as cast-in-place, poured-in-place construction involves concrete being poured, or cast, on site using form work — as compared to precast concrete, which is cast elsewhere and then brought on site. Electrical non-metallic tubing (ENT) is the preferred conduit used in poured-in-place concrete construction for residential and commercial buildings, such as:



Apartments and condos



Hotels



Parking decks



2

Understand challenges

For any contractor, time is money. Reducing the time needed to complete the job — without cutting corners in terms of quality — is key to increasing profitability.

Speed + Quality = Profitability

3

Deliver solutions

For contractors working in poured-in-place construction, ABB Installation Products offers new, stronger Carlon® polycarbonate two-piece ENT fittings that provide 200 lb.+ pull-out force in all sizes and easier installation resulting in an average 21% labor savings in laboratory testing over the one-piece Carlon ENT fittings.

200 lb.+



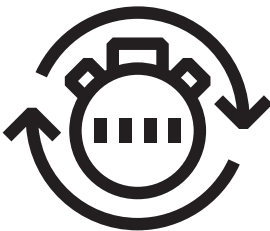
pull-out force

21%

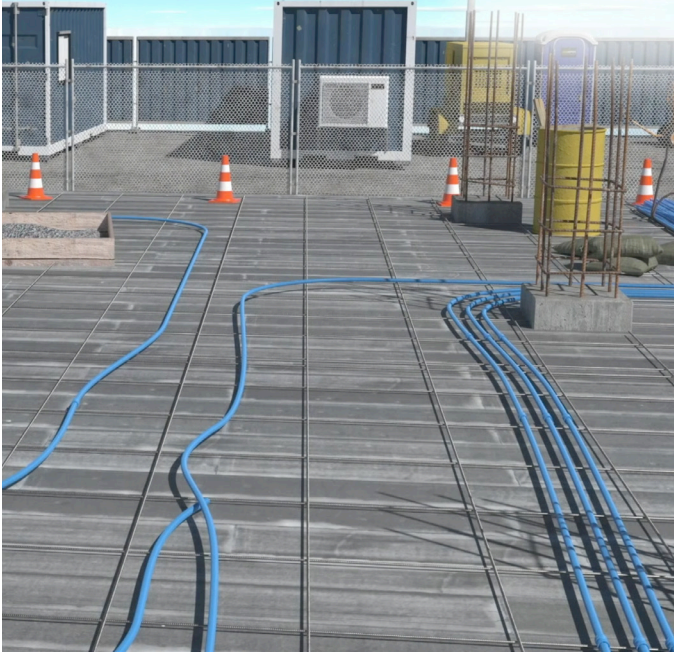


average labor savings in laboratory testing

Key differentiating features that help contractors deliver a quality job with time and labor savings



- Rugged, durable polycarbonate construction
- Innovative, improved design featuring 8-tab snap for fast, easy installation
- Over 200 lb. pull-out force
- No taping or PVC cement required, thanks to concrete-tight design
- Freely rotating pieces prevent kinks in ENT — excellent for use with long conduit runs



Time and labor savings study



ABB Installation Products conducted a time study using the old and new Carlon ENT fittings. Participants were given 20 pieces each of the old and new fittings and installed them on ENT.

Results

84

seconds to fit
20 old pieces

66

seconds to fit
20 new pieces

21%
time savings
based on laboratory testing

Carlon® electrical non-metallic tubing (ENT) two-piece fittings

Catalog no.	Description	Box qty.	UPC no.
A240D2	½" ENT coupling	150	708917422303
A240E2	¾" ENT coupling	100	708917422310
A240F2	1" ENT coupling	50	708917422327
A243D2	½" ENT threaded male adapter	150	708917422334
A243E2	¾" ENT threaded male adapter	100	708917422341
A243F2	1" ENT threaded male adapter	50	708917422358
A253D2	½" ENT snap-in male adapter	150	708917422365
A253E2	¾" ENT snap-in male adapter	100	708917422372
A253F2	1" ENT snap-in male adapter	50	708917422389

ABB Installation Products Inc.
Electrification Business
860 Ridge Lake Blvd.
Memphis, TN 38120

electrification.us.abb.com

ABB has made every attempt to ensure the accuracy and reliability of the contents of this document. However, all content is provided for general informational purposes only, and ABB makes no guaranty or warranty, express or implied, as to the accuracy of any technical content, or that the information contained in this publication will be error free and all such guarantees or warranties are expressly

disclaimed. ABB may change or modify the contents at any time, without prior notice. We reserve all rights in this document and in the subject matter and illustrations contained therein. Any reproduction or utilization of its contents — in whole or in parts — is forbidden without prior written consent of ABB. © 2025 ABB Installation Products Inc. and/or its related companies All rights reserved